

THE PROPERTY CO.

GROUP



352 Woollooware Road Burraneer NSW

5 3 2

Perfectly positioned on 872.6 sqm and offering a wonderful sun-drenched aspect, this five bedroom brick residence offers room for all the family, including potential in law or guest accommodation. Combining water views, a number of living spaces, oversized main suite, beautiful kitchen and dining opening the large entertaining deck, overlooking the sparkling in ground pool and level grassed yard. Also featuring drive thru lock up garaging, private landscaped gardens, gas cooking and ducted air conditioning. Zone C4, Land Dimensions 25.48m X 35.66m, offering potential future development.

Land Size : 872.6 sqm

View : <https://www.thepropertyco.com.au/7840484>

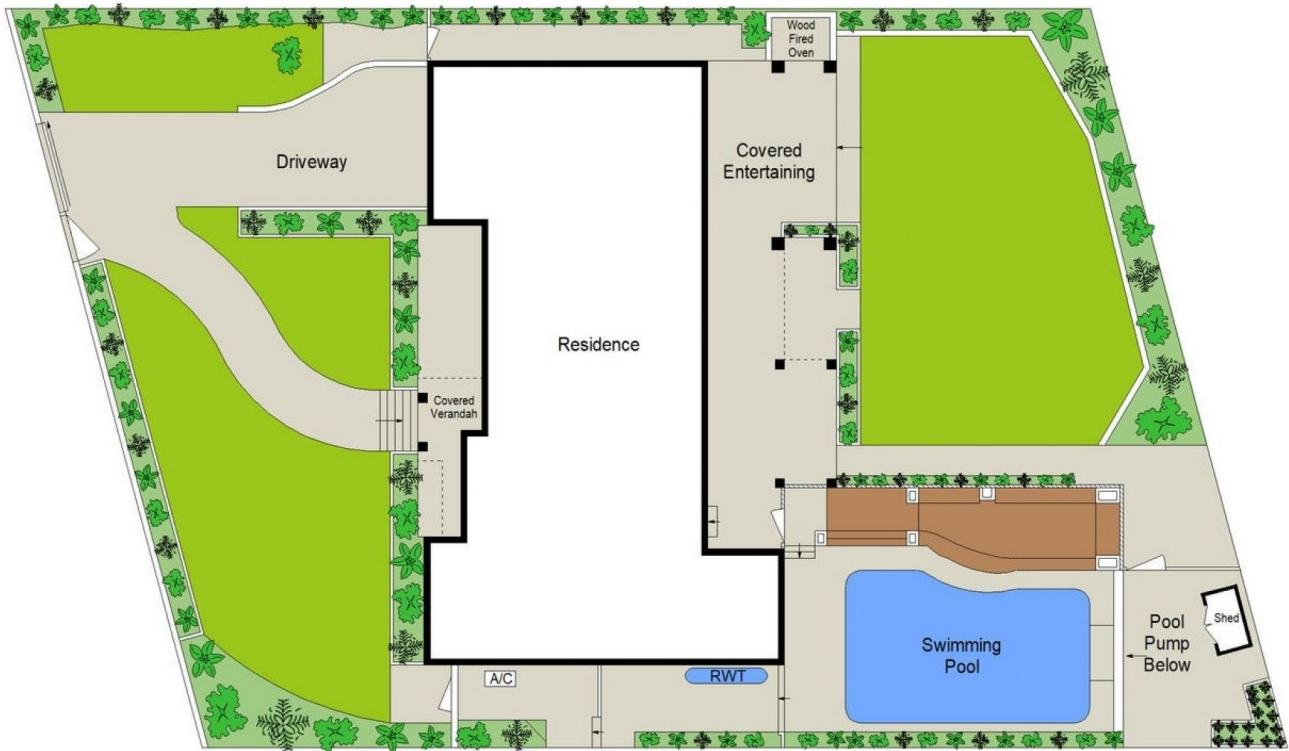


Christopher Igoe
02 8320 6666

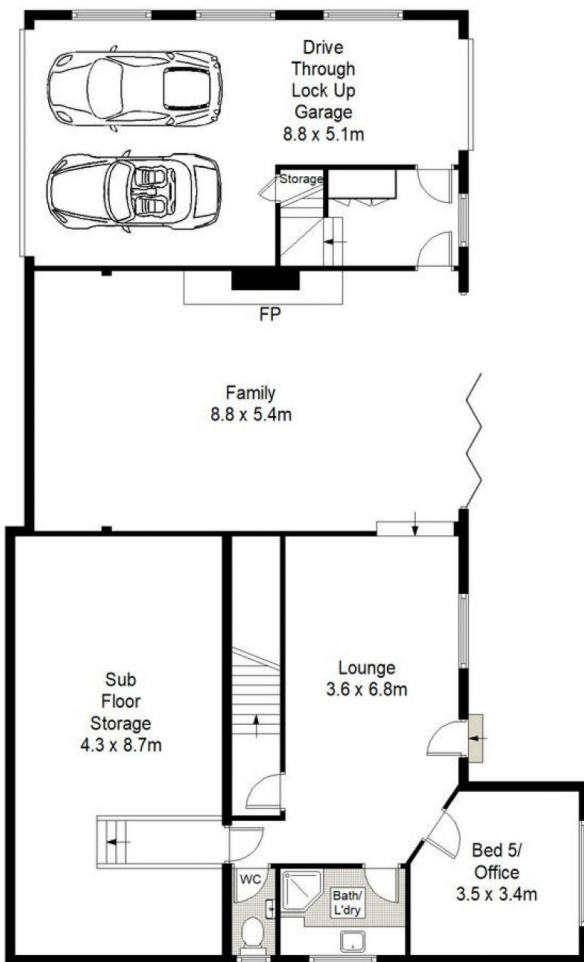
Link to pre purchase Building & Pest report: <https://www.homesafeinspections.com.au/building-report-details/038efd85-cc84-4902-c6f8-08dbd067bac5>

For all your home loan needs, please give the team at The

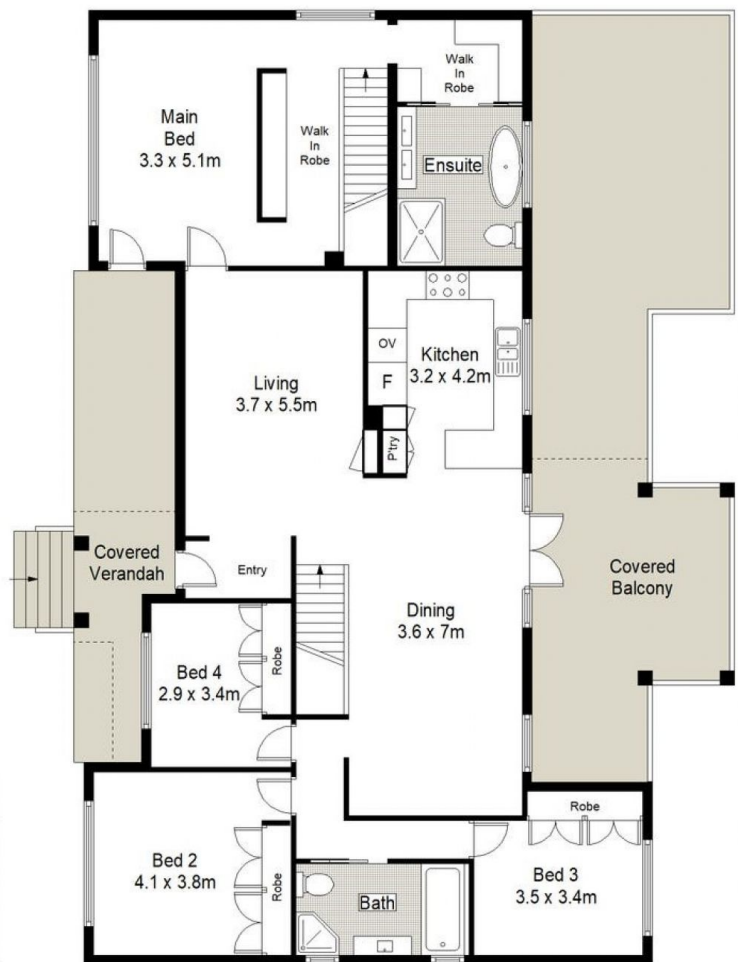
<https://www.thepropertyco.com.au>



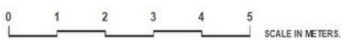
SITE PLAN (NOT TO SCALE)



LOWER GROUND FLOOR



RAISED GROUND FLOOR



352 Woollooware Road, Burraneer

5 3 2

Scale in metres. Indicative only. Dimensions are approximate. All information contained herein is gathered from sources we believe to be reliable. However we cannot guarantee its accuracy and interested persons should rely on their own enquiries.

