

THE PROPERTY CO.

GROUP



2/9-13 Clubb Crescent Miranda NSW

2 1 2

Newly renovated and offering a generous open plan layout, this modern ground floor apartment offers a convenient, low maintenance lifestyle. Set in a quiet position in a well-maintained block, this apartment is perfectly located close to Westfield Miranda, public transport hubs, and Miranda's cafes and restaurants.

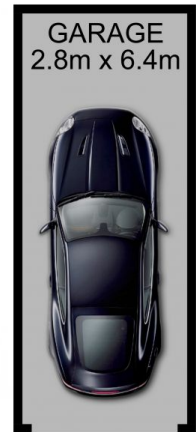
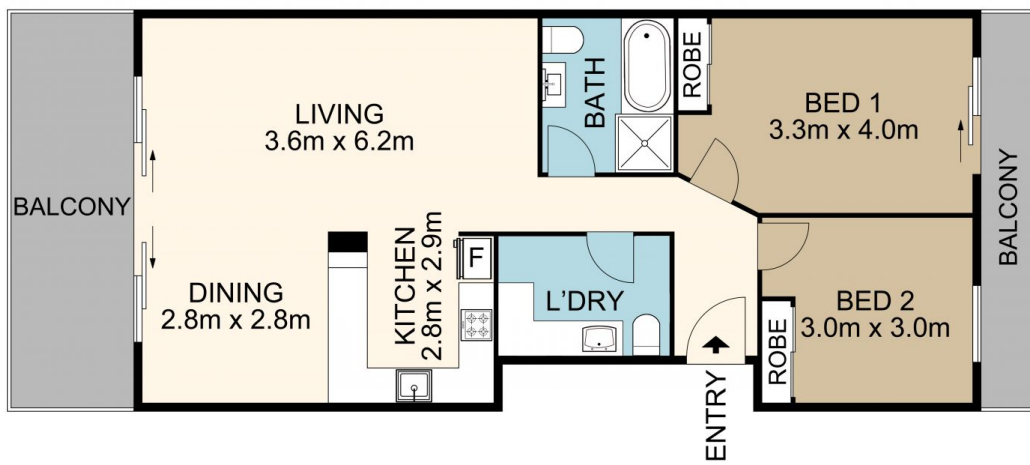
Type : Apartment
Land Size : 111 sqm
View : <https://www.thepropertyco.com.au/7842887>

- Open plan living and dining flowing to North facing balcony
- Two generous bedrooms both with built-ins, Master with access to private balcony
- Stunning gourmet kitchen with Caesar Stone benchtops,

[For full version visit the website](https://www.thepropertyco.com.au/7842887)

<https://www.thepropertyco.com.au>

2/9-13 Clubb Crescent, Miranda



THE PROPERTY CO.
GROUP

Please note these measurements are approximate only. The plan is intended as a rough guide for illustrative purpose. It is not warranted or guaranteed to be correct nor is it part of the scale or contract

