

THE PROPERTY CO.

GROUP



119 North West Arm Road GyMEA NSW

3 1 4

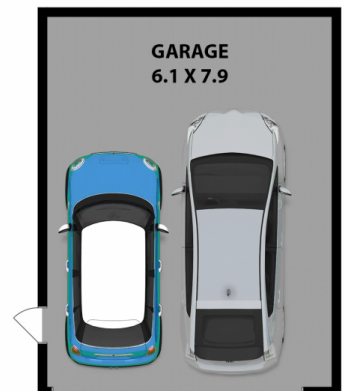
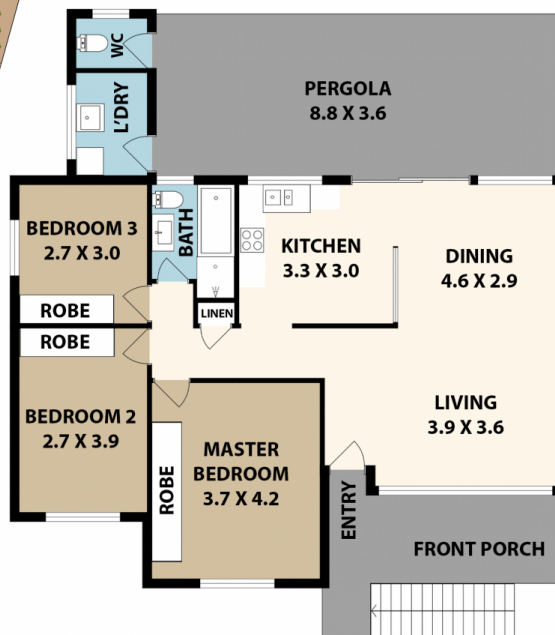
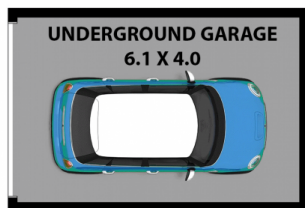
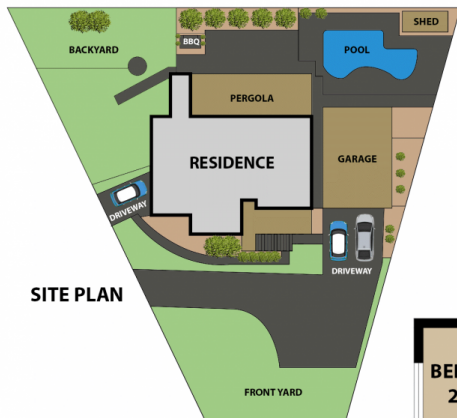
This single-level residence is set on an abundant 809.4 SQM (approx.) of land. Situated within approximately 1.1km to local shops, eateries and GyMEA Station. This appealing property presents a rare opportunity to acquire a large and desirable block with dual street frontages each stretching over 40 metres, ideal for those ready to move in, renovate or develop duplex's STCA.

Type : House
Land Size : 809.4 sqm
View : <https://www.thepropertyco.com.au/7842890>

- Ideal position for your dream house or duplex (STCA)
- Three generous bedrooms all with built in wardrobes
- Newly renovated kitchen with Caesar stone benchtops & omega appliances
- Neat & tidy bathroom with separate shower & bath

[For full version visit the website](https://www.thepropertyco.com.au/7842890)

<https://www.thepropertyco.com.au>



119 North West Arm Rd, GyMEA

All measurement are approximate. For illustrative purposes only. INT AREA 157 M²



THE PROPERTY CO.
GROUP