

THE PROPERTY CO.

GROUP



22a North West Arm Road GyMEA NSW

5 🏠 4 🚗 2 🚗

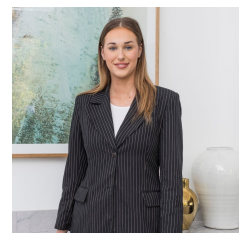
This stunning, brand new architecturally designed duplex, features five spacious bedrooms, two with ensuites, open plan living with soaring high 3.3-3.9m ceilings, gorgeous kitchen with butlers pantry and top of the line finishes. Epitomising modern luxury this residence offers fire place, wonderful flow from living to the covered alfresco deck, level grassed yard and fifth bedroom or study option on the ground level. Perfectly situated 950m from GyMEA train station and GyMEA shopping village, plus gated access to Kenna Street reserve behind.

- Gourmet kitchen, complete with a butler's pantry, integrated Smeg appliances including microwave, oven, gas stovetop, and dishwasher. A buffet-style kitchen island offers ample space for cooking and entertaining.

Type : Semi Detached
Land Size : 347.75 sqm
View : <https://www.thepropertyco.com.au/8070406>



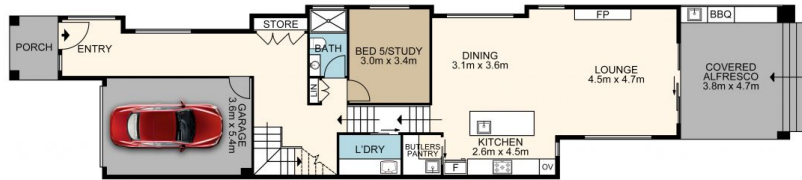
Christopher Igoe
02 8320 6666



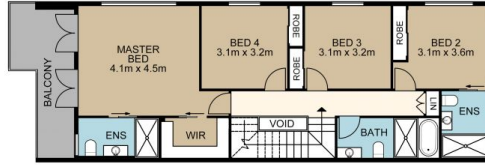
Emily Cooper
02 8320 6666

[For full version visit the website](https://www.thepropertyco.com.au)

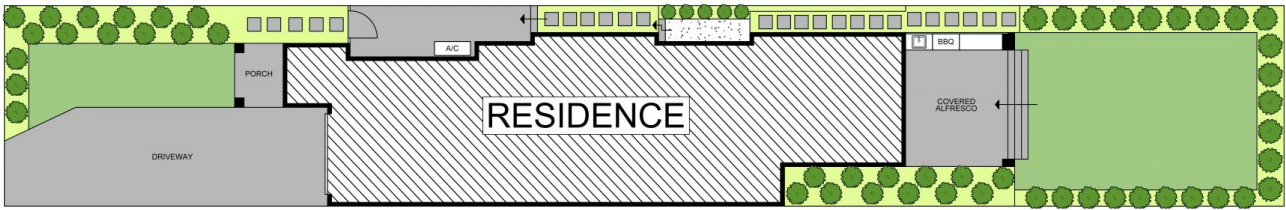
<https://www.thepropertyco.com.au>



GROUND FLOOR



FIRST FLOOR



SITE PLAN

22A North West Arm Road, Gymea

All measurement are approximate. For illustrative purposes only. INT AREA 210M²



THE PROPERTY CO.
GROUP