

# THE PROPERTY CO.

GROUP



**89 Waratah Street Kirrawee NSW**

4 3 2

A selection of new semi-detached homes designed with family living and entertaining in mind, ideally located within a short walk from Kirrawee South Village and Kirrawee train station, offering convenient access to Sydney CBD. Enjoy the great outdoors with easy access to the Shire's stunning beaches, parks, and waterways for relaxation or recreation.

- Featuring a variety of floorplans, including three and four-bedroom layouts
- Designed to maximise open space and natural north facing light
- High-end kitchens equipped with barn-style sinks, Smeg appliances, and stone benchtops
- Tiled living areas complemented by engineered timber

**Type** : Townhouse

**Price** : For Sale

**View** : <https://www.thepropertyco.com.au/8080490>



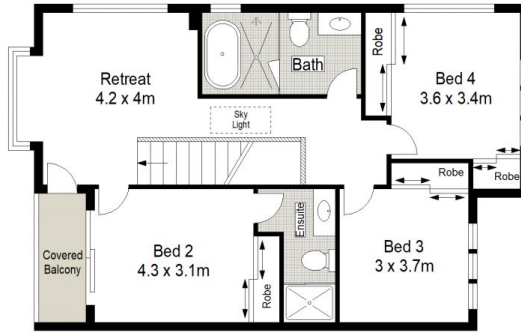
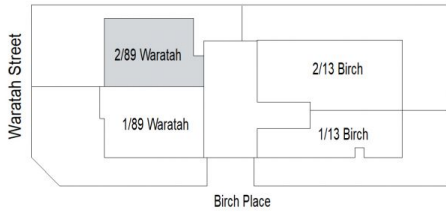
**Jason Mikhail**  
02 8320 6666



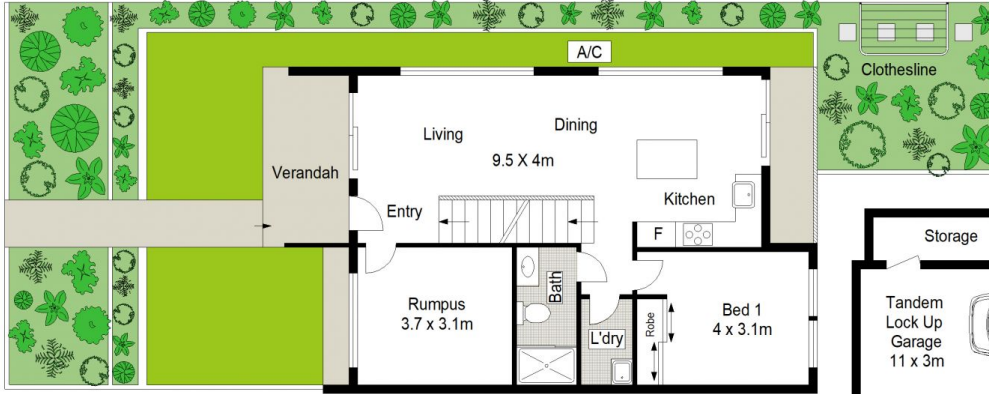
**Jonas Kapsanis**  
02 8320 6666

[For full version visit the website](https://www.thepropertyco.com.au)

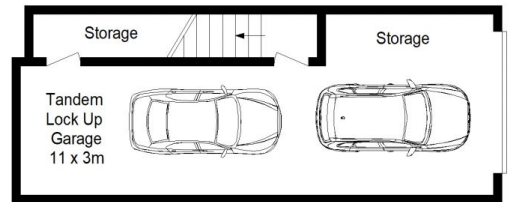
<https://www.thepropertyco.com.au>



FIRST FLOOR



GROUND FLOOR



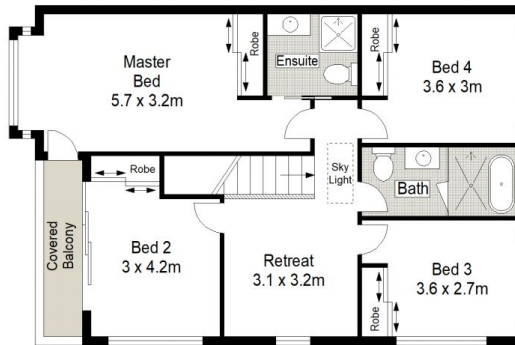
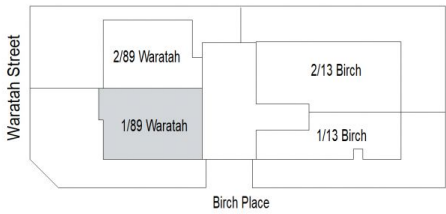
LOWER GROUND FLOOR



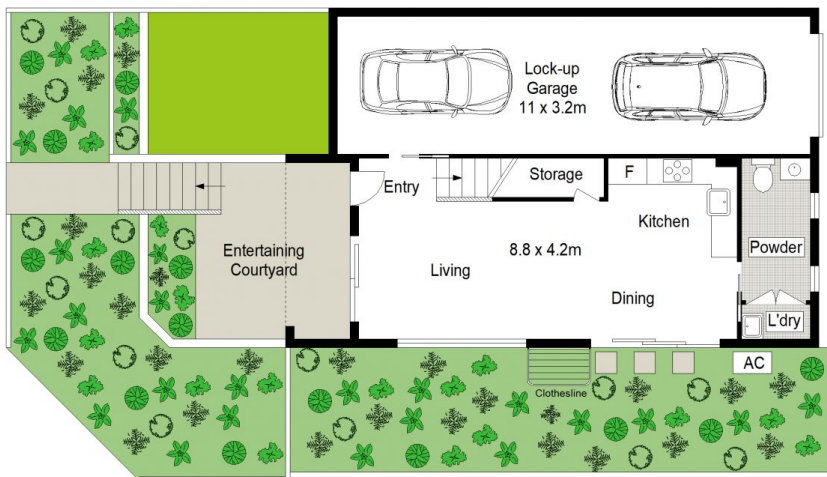
2/89 Waratah Street, Kirrawee



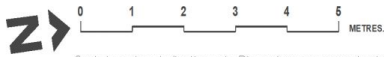
Scale in metres. Indicative only. Dimensions are approximate. All information contained herein is gathered from sources we believe to be reliable. However we cannot guarantee its accuracy and interested persons should rely on their own enquiries.



FIRST FLOOR



GROUND FLOOR



1/89 Waratah Street, Kirrawee



Scale in metres. Indicative only. Dimensions are approximate. All information contained herein is gathered from sources we believe to be reliable. However we cannot guarantee its accuracy and interested persons should rely on their own enquiries.