

THE PROPERTY CO.

GROUP



58a Tara Street Sylvania NSW

4 3 3

Set on the picturesque peninsular of Kangaroo Point, commanding a prestigious, elevated, position and outlook across Georges River and the city skyline, this magnificent brand new four bedroom residence features premium finishes, optimising exceptional style and design.

Located within close proximity to Sylvania Shopping Village as well as popular local schools, parks and transport options, this stunning family home is perfectly suited for contemporary living in a very popular, sought after neighbourhood.

- Brand new architecturally designed family home overlooking city skyline & water
- Ground floor bedroom / home office with built-in robe and

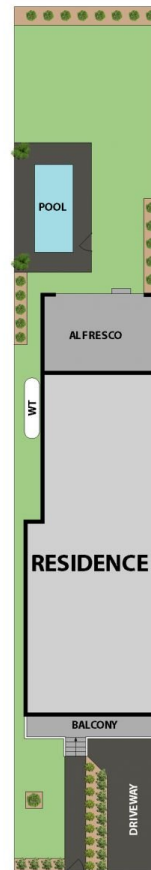
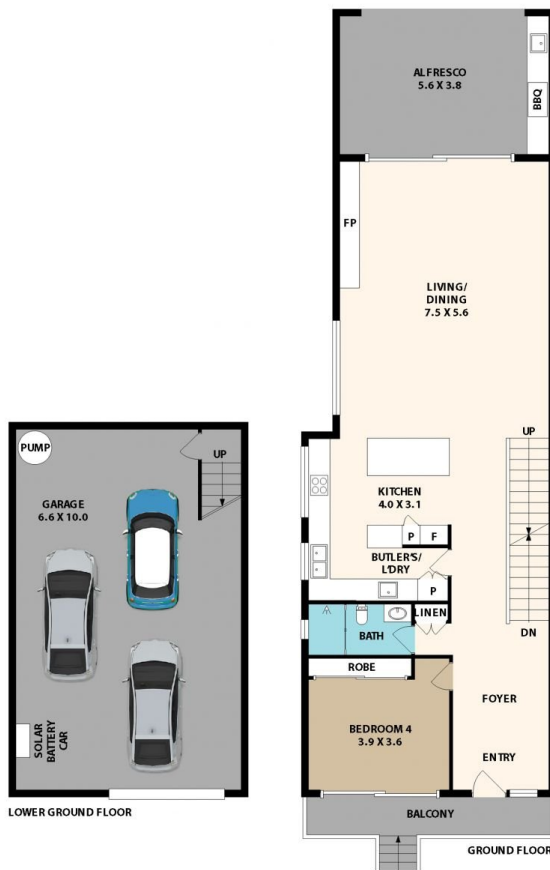
Type : Semi Detached
Price : Auction, Unless Sold Prior
Land Size : 360.1 sqm
View : <https://www.thepropertyco.com.au/8113253>



Briolynn Kennedy
02 8320 6666

[For full version visit the website](https://www.thepropertyco.com.au)

<https://www.thepropertyco.com.au>



58A Tara St, Sylvania

Floor plan produced by ENFORCEFX.COM - All measurements are approximate. Floor plan is not to scale. All information contained here is believed to be reliable, however we cannot guarantee the accuracy and interested persons should rely on their own enquiries.



THE PROPERTY CO.
GROUP