

# THE PROPERTY CO.

GROUP



## 14 Michelle Drive Constitution Hill NSW

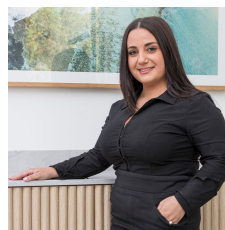
4 2 1

Discover a unique opportunity to own this beautiful home and council approved granny flat package at 14 Michelle Drive, Constitution Hill. Perfect for extended families, investors, or those seeking extra rental income, this property combines practical living in an ideal location with Easy access to Cumberland Highway, M4 and M2 Motorways.

### Main House Features:

- Three spacious bedrooms
- Updated kitchen with gas cooking, dishwasher and ample storage
- Bathroom with large bath combined with shower
- Oversized undercover entertainment deck with a leafy outlook to yard and jacuzzi

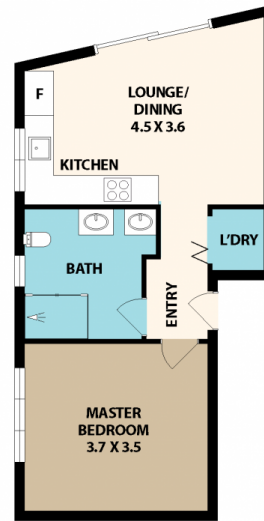
**Type** : House  
**Price** : \$ 1,430,000  
**Land Size** : 638.6 sqm  
**View** : <https://www.thepropertyco.com.au/8130485>



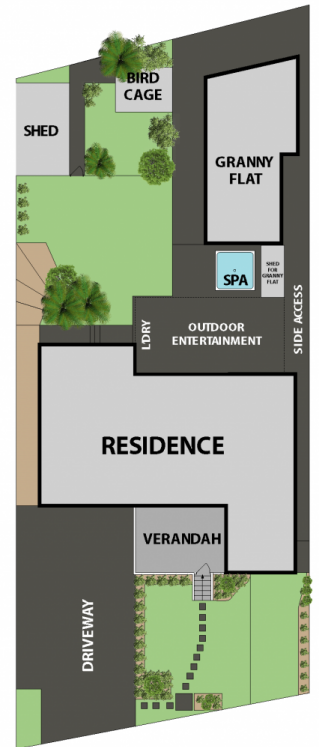
**Rhonda Mikha**  
02 8320 6666

[For full version visit the website](https://www.thepropertyco.com.au)

<https://www.thepropertyco.com.au>



GRANNY FLAT



## 14 Michelle Dr, Constitution Hill

Floor plan produced by ENFORCEFX.COM - All measurements are approximate. Floor plan is not to scale. All information contained here is believed to be reliable, however we cannot guarantee the accuracy and interested persons should rely on their own enquiries.



**THE PROPERTY CO.**  
GROUP